

## MINUTES

University of Kentucky  
College of Agriculture  
StaffLINKS Committee Meeting  
November 10, 2015



### **Attendance:**

Karin Pekarchik, Chair  
Tracy Cayson  
Jennie Condra  
Debbie Gutierrez  
Lissa Pohl  
Karen Pulliam  
Cindy Stidham  
Helen Williams  
Melanie Heist  
Stephany Chandler  
Judith Burgess  
Rhesa King  
Christine Tarne  
Eileen Kopp (via Skype)  
Jackie Allen (via Skype)  
Lisa Collins, advisory member  
Megan Lucy, Secretary, ad hoc  
Susan Campbell, presenter

### **Absent:**

Kim Henken  
Sheryl Friend  
Marilyn Hooks  
Jozsef Stork  
Abby Sorrell  
Jenny Evans  
Darlene Mylin

## AGENDA

11:00-Noon

249 Barnhart Building

Presiding: Karin Pekarchik, Chair

Welcome and Call to Order

Items to be addressed:

11:00 Giving Opportunities

- Circle of Love: explanation, distribution of names (Christine Tarne)- StaffLinks, as in years past will coordinate Circle of Love participation for CAFE. Christine Tarne in Plant and Soil Sciences

will be this year's coordinator. More information has been circulated via the Listserv, and Christine may be reached at [Christine.Tarne@uky.edu](mailto:Christine.Tarne@uky.edu) . Gifts should be delivered to Christine in 105 Plant Science Building by November 30. See the attachment for more details.

- Thanksgiving Baskets (Cindy Stidham)- After last year's successful effort, StaffLinks decided to once again participate in the Thanksgiving Basket collection. StaffLinks members are encouraged to give to the StaffLinks basket, or start a basket in their own department. Cindy Stidham of Animal and Food Sciences is coordinating the effort. More information was circulated via the Listserv, and Cindy may be reached at [cindy@email.uky.edu](mailto:cindy@email.uky.edu).
- Recap of Round Up food drive event- The Big Blue Pantry Food Drive that StaffLinks coordinated during Round Up was a great success! We donated at least 44 pounds of food, but most likely more. The Big Blue Pantry and UK Federal Credit Union are hoping to continue cooperation with StaffLinks throughout the coming year. See the attachments for more details.

#### 11:30 Susan Campbell

- College Business Management Institute- Susan Campbell presented on the College Business Management Institute, a week long professional development conference for staff held each July at UK. The Dean provides scholarships for 10 staff members to attend each year, and departments may sponsor additional staff. Susan's presentation is included in the attachments to these minutes. After the meeting, we searched for a CBMI url, however it appears the 2015 website has been taken down and the 2016 website is not yet available. Look for more information in the Spring about this opportunity. Stafflinks, Susan, and the Dean's office will make an effort to ensure that information about the 2016 CBMI is circulated when it is available.

#### Other Business, Comments, Concerns

- Lissa Pohl discussed the recent UK Leadership Forum, which she helped to plan. The forum was held on October 27-29, and was available to the entire UK community. This was the first of what is hoped to be many years of this great leadership development opportunity. Many of the sessions were recorded and are available to view at <http://www.uky.edu/hr/hr-home/university-leadership-forum>.
- Karin Pekarchik recently returned from Germany, where she participated in the Fulbright Scholar Program, working collaboratively with university staff from German, French, and other European universities. Karin has provided a presentation about her experience, which is

included in the attachments to the minutes. She also encourages other UK staff members to apply for the Fulbright program. More information can be found at this url

<http://www.cies.org/>.

Adjournment

Next Meeting: February 9, 2016, 11:00

Attachments:

Circle of Love Flier

Thanksgiving Basket List

Big Blue Pantry Food Drive Results

CBMI Presentation

Fulbright Scholars Presentation

# Circle of Love

Circle of Love is a sponsored event that provides gifts for local families who can use extra support over the holiday season!

## CIRCLE OF LOVE KICK OFF!

Circle of Love is StaffLINKS' big giving event of the year. Last year, CAFE supported 55 children. Let's see if we can outdo ourselves this year!

Details: Gifts are due **Monday, November 30<sup>th</sup>**. Please purchase 2-4 gifts for each child sponsored. You can share the cost by sponsoring a child with a friend, or have a group sponsor a family. Bring unwrapped gifts (with gift wrap and tape) to 105 Plant Science Building. Call or email Christine (contact information below) in advance.

**Happy giving!**

Gift Drop Off:

Christine Tarne, PSS  
[christine.tarne@uky.edu](mailto:christine.tarne@uky.edu)  
859-218-0710



For more info  
contact:

[beyondtheblue@ukcco.org](mailto:beyondtheblue@ukcco.org)

## Thanksgiving Basket Checklist

Below are the basics of a Thanksgiving meal. I have included guidelines for the meal, but feel free to fill the basket full of extra items from the list or other items you deem appropriate for a thanksgiving meal for a family. Please be sure that all items are non-perishable.

Here are the essentials for the baskets:

- Instant mashed potatoes
- Cranberry sauce
- Box of stuffing
- Gravy
- \$15 gift card or cash in an envelope for a Turkey

Please choose from each of the following groups:

1. Please choose **at least two** items:

- Green beans
- Peas
- Corn
- Lima Beans

2. Please choose **at least one** item:

- Canned pumpkin
- Canned yams

3. Please choose **one** or provide other items for a dessert:

- Jell-O
- Canned Vanilla Pudding, vanilla wafers

- Other items you might include in your basket to make a family's thanksgiving just that much better:
  - Toiletries such as shampoo, conditioner, soap, feminine hygiene products, diapers, baby wipes, hand soap, tissue, etc.
  - Football/small games
  - Happy Thanksgiving card

**Baskets are to be turned in on Thursday, November 19 or Friday, November 20 to the Center for Community Outreach located in 361 Blazer Hall.**

Thank you for making a quality thanksgiving meal possible for a needy family this Thanksgiving!

Karin,

We collected 44 pounds of food from AgRoundUp. Thank you! It was an assortment including tuna, brown rice, beans, and peaches. We have already utilized the food in our weekly operations serving 80 children, youth, college students and older adults experiencing hunger, homelessness and isolation in Lexington. The food is also incorporated into our cooking classes with youth from Martin Luther King Academy of Excellence and older adults living in Lexington Housing Authority apartments. The food donations were shared with Big Blue Pantry to reach students on campus who are experiencing hunger.

Thank you for being an active part of the solution to end hunger in Lexington.

Amanda S. Hege, RD, LD  
Director of Community Outreach  
Dietetics and Human Nutrition  
University of Kentucky  
222 Funkhouser Building  
Lexington, KY 40506



**cbmi 2015**  
College Business Management Institute



# What is CBMI?

- College Business Management Institute
- Sponsored by the Southern Association of College and University Business Officers, a professional organization for university staff
- One week intensive educational experience with classes for both new and returning students



# Why participate in CBMI?

- Professional development of our staff members is a key component of the College's strategic plan.
- Professional development assists staff members in:
  - Developing new skills
  - Improving and maintaining existing skills
  - Making connections within UK, and throughout higher education as an industry
  - Gaining confidence
  - Envisioning their career trajectories
  - Staying on the cutting edge

## Topics Covered at CBMI

- Auxiliary services
- Facilities management
- Accounting
- Human resources
- Social media
- Challenges facing higher education
- Purchasing
- Team building
- Communication
- Strategic planning
- Succession planning
- Budgeting
- Audits
- Procard management
- Developing leadership
- Contracting
- Tax compliance
- Customer service
- Information security
- Public relations
- Motivation
- Equipment inventory
- Enrollment management
- Administrative systems
- Student affairs
- Fraud and ethics
- Planning effective meetings
- Campus IT trends
- Sponsored programs
- Negotiation
- Safety on campus
- Accreditation
- Stewardship of gifts
- Increasing enrollment
- Business etiquette
- Legal issues

# CBMI Instructors

- Eddie Mills, Associate VP, Georgia Southern University
- Jairy Hunter, President, Charleston Southern University
- Jerry Farley, President, Washburn University
- Bill Harris, Chief Procurement Officer, University of Kentucky
- Quint Hill, HR Director, University System of Georgia
- John P. Harrod, retired Director of Facilities Management, University of Wisconsin-Madison
- To name a few...

## When and where is CBMI?

- On campus at UK
- White Hall Classroom building
- Last week of July



# Who goes to CBMI?

- UK Staff
- Staff from universities around the country
- Recent CAFE Staff who have gone:
  - Megan Lucy, Dean's Office
  - Christine Tawasha, Business Center
  - Darlene Mylin, Extension
  - Dian Stapleton, Extension
  - Deb Mollett, Veterinary Science
  - Mary Hammons, Veterinary Science
  - Kristin Watkins, Agricultural Economics

# Scholarships

- For the past several years, the Dean's Office has funded up to ten scholarships per year for business officers in our departments to attend.
- The scholarships are normally awarded for the duration of the three year program. So, a recipient in year one of CBMI has a high probability of receiving the scholarship for years two and three as well.
- The scholarship nomination process takes place in April or May each year.

"I have to say that the CBMI conference was one of the most insightful, empowering conferences I have ever attended. I have printed out material and posted it around the office. I think it helps bring a sense of team and inclusiveness to the group as a whole. I highly recommend sending staff when at all possible. "

-Mary Hammons, Veterinary Science

"As a first year attendee, I found that CBMI provided a very good overview of how universities work in general - from purchasing to physical plant services. It has helped me to have a more in-depth understanding of how what we do in business offices affects different units within the university. I believe that it has also helped me to grow personally as it also addressed issues such as ethics and integrity. I feel energized and enthusiastic about applying what I learned in my job and definitely look forward to years 2 and 3."

-Deb Mollett, Veterinary Science



“CBMI was a wonderful opportunity for me to learn more about higher education as an industry and where I fit into that, at the department, university, and global levels. I benefitted from meeting people with similar jobs to my own from around the country, which helped me envision where my career could go. The course work challenged me far beyond the typical professional development courses I have taken through UK HR, and I truly felt that I knew more about higher education at the end of the week than I did going in.”

-Megan Lucy, Dean's Office



# The Fulbright Program & Collaborative Opportunities in Germany



11/6/2015  
Karin Pekarchik  
Distance Learning Trainer/Extension Associate Senior  
Chair, CAFE StaffLINKS  
Participant, Fulbright Seminar for Administrators in International  
Education, Germany 2015

# This Presentation:

- My interest in Germany and the German educational system
- My three-week “boondoggle” to Germany
- The Fulbright Program
- Highlights of the German educational system
- How we can collaborate with Germany and other EU countries
- How you can participate in a Fulbright program

# BAE's Technical Systems Management

- TSM is loosely modelled on the German dual education system, which combines work and theoretical training
- Dr. Dvorak and I will be teaching two courses in Germany in 2017
  - BAE 305 DC Circuits and Microelectronics
  - GEN 302 German STEAM, Culture, and History



## The German-American Fulbright Program

The German-American Fulbright Program implements Senator J. William Fulbright's visionary concept: The promotion of mutual understanding between our two countries through academic and bicultural exchange.

The Fulbright Program has international outreach, providing exchanges between the United States and over 155 countries and territories worldwide. Currently, fifty permanent commissions support the work of the Fulbright Program on the binational level, among them the German-American Commission. Annually about 8,000 scholars, American and foreign, participate in the Fulbright exchange. Since the inception of the Fulbright Program in 1946, it has sponsored approximately 310,000 scholars.

The largest and most varied of the Fulbright programs worldwide, the German-American Fulbright Program has sponsored over 45,000 Germans and Americans since its inception in 1952.

The defining characteristic of the program is student exchange. This core program is complemented by academic year programs for professors, teachers, teaching assistants, and journalists; summer internship programs for students; and seminars for experts in university administration and German and American Studies.

The Fulbright Commission is a binational board consisting of the German Foreign Minister and the American Ambassador to Germany, who act as honorary chairmen, and five German and five American members, all of whom are appointed by the honorary chairmen. Guidelines are provided by the J. William Fulbright Foreign Scholarship Board, whose members are appointed by the President of the United States. The program is administered by the Secretariat located in Berlin, Germany; the Secretariat's partner on the American side is the Bureau of Educational and Cultural Affairs in the U.S. Department of State.



Senator J. William Fulbright

In die USA  
To Germany  
Alumni  
The Funnel Online  
Guest Lecturers  
The Commission

# The German-American Fulbright Program

[Home](#) > [To Germany](#) > [Index of Grants](#) > Seminar for U.S. Administrators in International Education

## Seminar for U.S. Administrators in International Education

OCTOBER 10 - OCTOBER 24, 2015

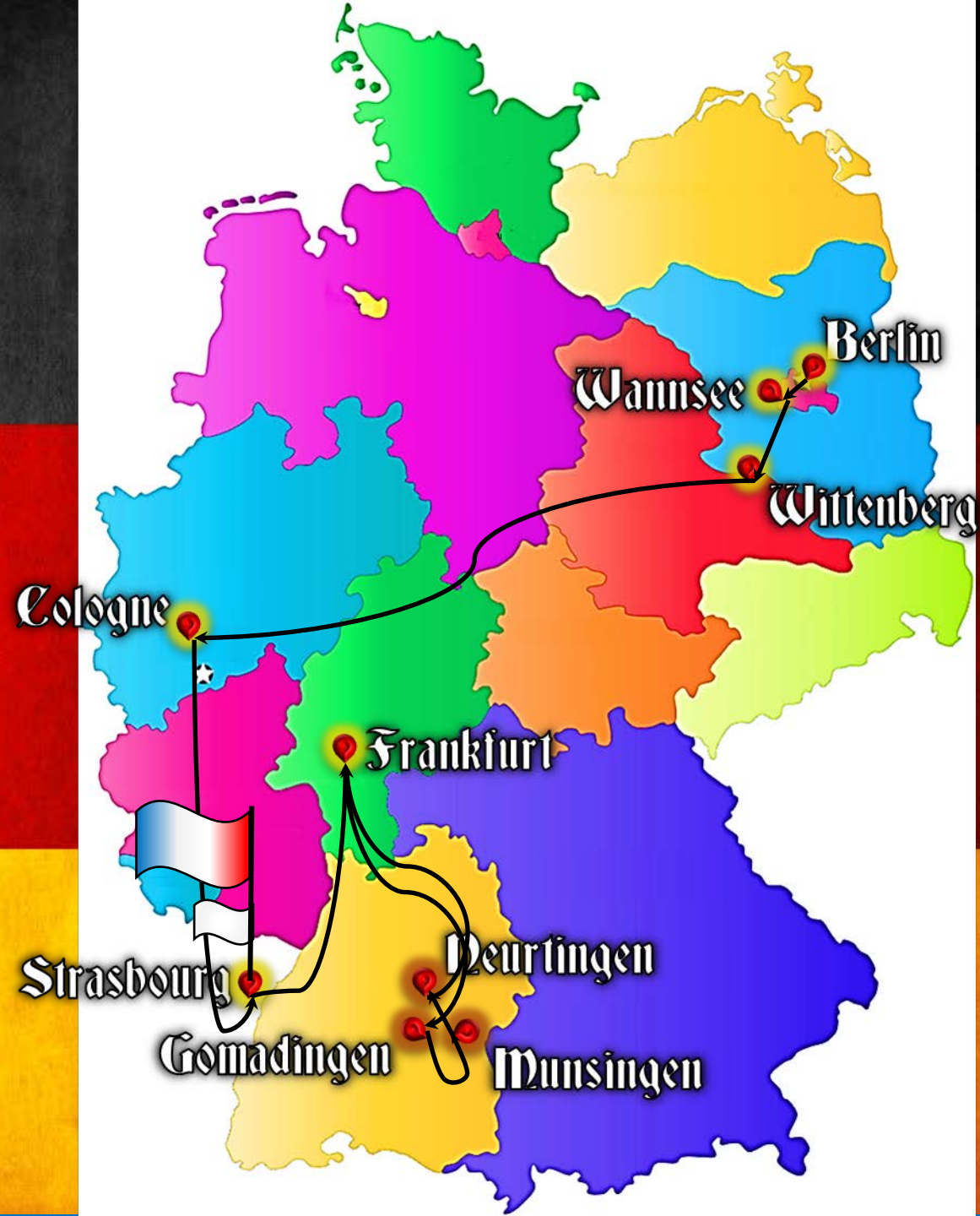


### DESCRIPTION

This two-week group seminar takes place in the fall and focuses on German higher education for American university, college, and community college administrators. The program includes briefings, campus visits and cultural events in Berlin and other cities in Germany. A new program feature is the meeting in Strasbourg, France with American colleagues who participated in a similar program to France, which offers new insights into the French and German education system.

The program consists of two parts: A general introduction to Germany and its system of higher education and a program portion in which participants split up in small subgroups enabling them to focus on their individual professional interests as they relate to the seminar. The 2015 program is scheduled for October 10 through October 24, 2015.

# Germany



# German Education Simplified:

## Three tiered high school system

- Gymnasium (academic)
- Realschule (vocational)
- Hapschule (lower vocational)

## Three tiered higher education

- University (research/acedemia)
- Fachhochschulen (applied sciences: engineering, business, law)
- Berufsakademien (professional training: crafts, technical)



# German vs. American Students

- German students more mature.
  - Have traveled. Speak 2-3 languages.
  - Graduating with *abitur* is equal to an ending sophomore.
  - See education as a basic right.
- 
- Americans have more flexibility.
  - Need/get more support services.
  - See themselves or are seen as “clients” of the educational system.

# Duale Fachhochschule

- Model is only 10 years old
  - Vocational training at the university level
  - Close ties to industry and world of work
  - Goal: employability and job skills
  - Student applies for the job first, then employer pays educational fees. Typically, three years for a bachelor's.
- 
- Example: Civil engineering duale fachhochschule in four years



Fachhochschule Köln  
Cologne University of Applied Sciences

## Dual Program in Civil Engineering (B. Eng.)

What is a **Dual** Program?

**Two** federally recognized degrees at accelerated pace ( $7 + 2 = 9$  semesters)

1. B. Eng. (CUAS)
2. Skilled Construction Worker or Drafter  
(Chamber of industry and commerce (IHK))

Only 2 semesters longer than the 7-semester B. Eng. Degree.

# Duale Fachhochschule

## Pros of the dual higher education

- Low drop out rate
- 85% of graduates are hired
- Financially independent
- Gain practical experience
- Small class size



## Cons

- Not flexible
- Very challenging
- Longer—adds one year (4)

# Duale Fachhochschule (con't)

## Three parts to dual FH

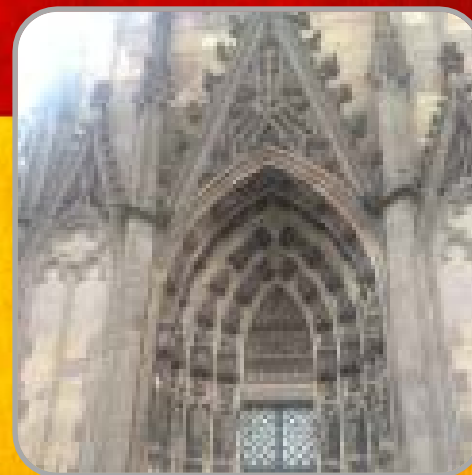
- School
- Company
- Training Center (shared practical training for students: how to pour concrete, welding, building forms, etc.)

Student works independently in Training Center; no bearing on grade.

# Duale Fachhochschule (con't)

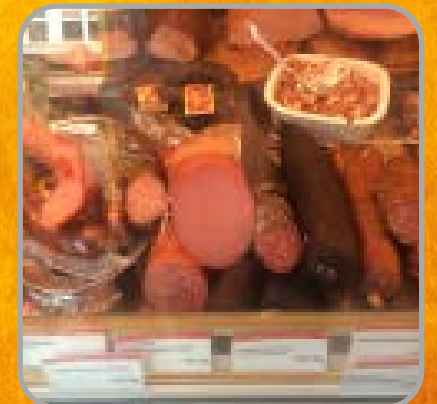
Students find their own positions. If they do not find a sponsor to hire them, they cannot participate in a dual FH degree.

Market value increases. Students have more experience and potential. Highly sought after.



# Overall Impressions

- Refugee crisis—an overriding concern
- Some fundamental differences in approach to citizenship, education
  - “Social good” heard often
  - Conscious of environment. TIPP protest, recycling, bicycling, walking, organic, non-GMO.
- Low unemployment rate.
- German humor, food.



# Collaborations

Fulbright Exchanges to Germany: Student, Staff, Faculty

Research—Master's, PhD, Project-based

Exchanges from Germany?

DAAD, Humbolt University, Max Planck, other.



# In closing, thank you:

German-American Fulbright Commission

CIES

Dr. Nokes, BAE

Dr. Dyk, CLD

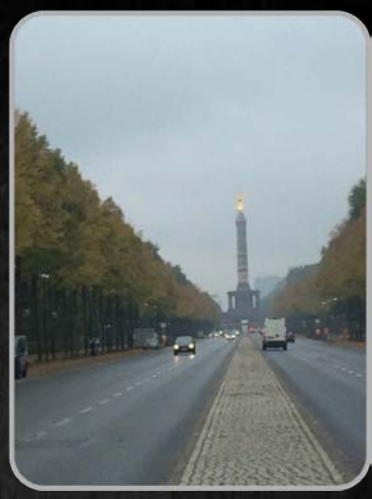
Josh Benton, Kentucky Cabinet for Economic Development

eLearning Innovation Initiative (eLII)

# Fulbright Programs

[www.cies.org](http://www.cies.org)

- Core Fulbright U.S. Scholar Program
- Shorter Seminars



Questions?  
Thank you

